

# Newsletter

November 2024 Issue

## Issue Highlights

**Upcoming Virtual Public Comment Opportunities & Listening Sessions**

**Submit a Written Public Comment**

**Endorsement and Maintenance (E&M) Advisory Group Committee Meetings: December 2-9**

**E&M Fall 2024 Cycle Full Measure Submissions Now Closed**

**Measure Developer Workshop Highlights**

**E&M Spring 2024 Cycle Project Reports**

**Pre-Measure Set Review (PRMR) Advisory Group Meetings: January 7-9**

**PRMR Recommendation Group Meetings: January 13-22**

**Core Quality Measure Collaborative (CQMC) Behavioral Health Meeting Summary**

## Submit Member Accomplishments

Do you have any news or accomplishments that you would like to share with us?

If so, we would love to feature you in our monthly newsletter.

Please email [PQMsupport@battelle.org](mailto:PQMsupport@battelle.org) with "PQM Member Highlight" in the subject line so we can celebrate your accomplishments.



## Virtual Public Comment Listening Sessions

The public is invited to attend our virtual listening sessions in November and December. This is an opportunity for you to provide live feedback regarding measures under consideration for select Centers for Medicare & Medicaid (CMS) programs, as well as measures seeking consensus-based endorsement!

### Endorsement & Maintenance (E&M) Listening Sessions

For measures submitted for endorsement consideration

- **E&M Virtual Public Comment Listening Session:** November 21, 10 a.m.-5:30 p.m. (ET). To attend, please [register](#).

For more information, please view the [agenda](#).

### Pre-Measure Set Review (PRMR) Listening Sessions

For measures on the Under Consideration (MUC) List. CMS will publish the MUC List by December 1.

- **PRMR Clinician Listening Session:** December 17, 1 p.m.- 4 p.m. (ET). To attend, please [register](#).
- **PRMR Hospital Listening Session:** December 18, 1 p.m.- 4 p.m. (ET). To attend, please [register](#).
- **PRMR PAC/LTC Listening Session:** December 19, 1 p.m.- 2 p.m. (ET). To attend, please [register](#).

For more information, visit the [PRMR](#) news and events page.

## Submit a Written Public Comment

Written public comment periods open **November 12**. You can provide your feedback through the [PQM website](#) during the following upcoming public comment periods:

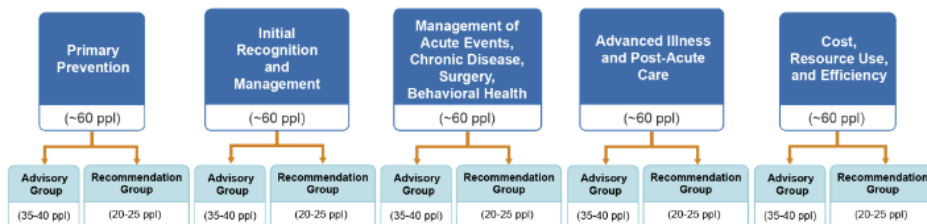
**MSR:** For the MSR Report & Spreadsheet, is November 12-November 27.

**E&M:** For the Fall 2024 Cycle measures, is November 15-December 16.

**PRMR:** For the measures on the 2024 MUC List, is December 2-December 30.

## E&M Updates

### E&M Advisory Group Member Corner



#### Virtual E&M Advisory Group meetings will be held **December 2-9**.

These virtual meetings are open to the public and no registration is required.

Calendar invites have been sent to all E&M committee members and developers/stewards of measures submitted for **Fall 2024** endorsement review.

If you are an Advisory Group committee member or a developer/steward of Fall 2024 measures, and you did not receive your respective **Fall 2024** Advisory Group meeting invite, please contact us at [PQMsupport@Battelle.org](mailto:PQMsupport@Battelle.org).

#### Virtual E&M Advisory Group Meetings

- [Management of Acute Events and Chronic Conditions:](#)  
December 2, 10 a.m.-5 p.m. (ET)
- [Cost and Efficiency:](#)  
December 3, 10 a.m.-5 p.m. (ET)
- [Advanced Illness and Post-Acute Care:](#)  
December 4, 10 a.m.-5 p.m. (ET)
- [Initial Recognition and Management:](#)  
December 5, 10 a.m.-5 p.m. (ET)
- [Primary Prevention:](#)  
December 9, 10 a.m.-5 p.m. (ET)

### Full Measure Submissions (FMS) Now Closed

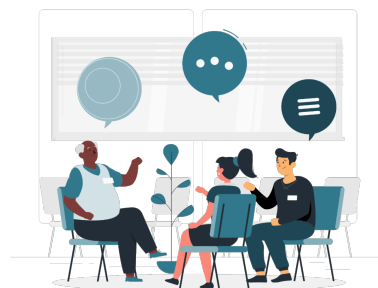
Full Measure Submission (FMS) closed on November 1.

We received a total of 39 measures for review across our five E&M projects.

Visit the [measure submission page](#) for more information about the measure submission process.

### PQM Measure Developer Workshop Highlights

We're pleased to announce the success of the PQM Measure Developer Workshop, "What Good Looks Like," held on October 30.



### Spring 2024 Cycle Project Reports Now Available

As part of our 6-month measure endorsement and maintenance review process, we held 11 virtual meetings that brought together 127 E&M committee members, measure developers/stewards, and members of the public.

Project Reports detailing the Spring 2024 measure endorsement decisions and committee discussion for each of the five E&M projects are published on the respective project pages:

- [Primary Prevention](#)
- [Initial Recognition and Management](#)

275 participants engaged in important discussions on quality measure development.

Thank you for your support!

- [Management of Acute Events, Chronic disease, Surgery, and Behavioral Health](#)
- [Cost and Efficiency](#)
- [Advanced Illness and Post-Acute Care](#)

View the [PQM event calendar](#) for more information.  
Please contact [PQMsupport@Battelle.org](mailto:PQMsupport@Battelle.org) if you have any questions.

## PRMR/MSR Updates

### PRMR Committee Member Corner

PRMR committee members, please note several upcoming dates and milestones for the 2024-2025 PRMR cycle.

Please visit the [PRMR](#) news and events page for additional details.



**PRMR Committee Member Orientation:**  
November 7, 1 p.m.- 3 p.m. (ET)

A meeting for PRMR committee members to review the PRMR process.

**Complete PRMR Pre-Meeting Initial Evaluation (PIE) Forms:** Early December

PRMR committee members provide written feedback via PIE Forms on MUC List measures.

### PRMR Advisory Group Meetings:

[PRMR Clinician Advisory Group Meeting:](#)

January 7,  
1 p.m.-3 p.m. (ET)

[PRMR Hospital Advisory Group Meeting:](#)

January 8,  
1 p.m.-3 p.m. (ET)

[PRMR PAC/LTC Advisory Group Meeting:](#)

January 9,  
1 p.m.-2 p.m. (ET)

**Please note:** The purpose of these meetings is for PRMR Advisory Group members to discuss their MUC feedback with their PRMR committee's Recommendation Group co-chairs. The meetings are open to the public.

### PRMR Recommendation Group Meetings:

[PRMR PAC/LTC Recommendation Group Meeting:](#)

January 13,  
1 p.m.-4 p.m. (ET)

[\\*PRMR Hospital Recommendation Group Meeting:](#)

January 15-January 16,  
10 a.m.-6 p.m. (ET)

[PRMR Clinician Recommendation Group Meeting:](#)

January 21-January 22,  
10 a.m.-6 p.m. (ET)

**Please note:** The purpose of these meetings is for PRMR Recommendation Group members to discuss issues/concerns raised during the Advisory group discussion and public comment period. The meetings are open to the public.

\*The **PRMR Hospital Recommendation Group Members** are invited to join us in-person in Baltimore for this year's meeting. All Hospital Recommendation Group Members should have received communications about registration and reservations. If you are on the committee and did not receive an email about this meeting, please contact us [PQMsupport@Battelle.org](mailto:PQMsupport@Battelle.org).

View the [PQM event calendar](#) for more information.  
Please contact [PQMsupport@Battelle.org](mailto:PQMsupport@Battelle.org) if you have any questions.

## CQMC Updates

## About CQMC

The CQMC is a broad-based coalition of health care leaders working to facilitate cross-payer measure alignment through the development of core sets of measures to assess the quality of health care in the United States.

The CQMC core measure sets (core sets) are intended for use in value-based payment programs and may also be used to drive improvement in high-priority areas.

The core sets can be used in their entirety to holistically assess quality or can serve as a starting point when selecting measures to meet specific goals.

CQMC core sets are developed and maintained using a multistakeholder, consensus-based process and established [measure selection principles](#).

Want to learn more? Please view the [CQMC](#) page.

Find the current CQMC core sets, past workgroup summaries, reports, and guiding principles and documents on the [CQMC Core Sets Page](#).



## CQMC Behavioral Health Workgroup Meeting Summary

We held our **Behavioral Health Workgroup Meeting** on **October 7, 2024**.

The group discussed the continued use of measures on the [Behavior Health core set](#).

For more information, please view the [Meeting Summary](#).

## Core Set Review Schedule

The CQMC reviews core measure sets annually to ensure they reflect the best available measures. The workgroups alternate every other year between full and light maintenance review.

View the [2024 Core Set Review Schedule](#).

**Full Maintenance:** The CQMC reviews potential new measures to address high-priority areas.

**Light Maintenance:** Workgroups review measures in the existing sets and remove measures, if necessary.

## CMQC Annual Strategic Meetings

We held our Annual Strategic Meeting on October 15, 2024. Battelle hosted over 80 participants that included leaders from CMS, Agency for Healthcare Research and Quality (AHRQ), and various private insurers.

Together the group discussed the next steps for the CMQC work in the areas of measure implementation, transition to digital quality measures, and efforts to improve patient safety.

For more information, contact please view the [Meeting Summary](#).

For more information, contact [CQMC@Battelle.org](mailto:CQMC@Battelle.org).

## About PQM

### Who We Are

Battelle is a [Centers for Medicare & Medicaid Services \(CMS\)](#) certified consensus-based entity. Battelle's PQM uses a consensus-based process involving a variety of experts to ensure informed and thoughtful endorsement reviews of qualified measures.

### Our Purpose

Staffed by experts in health care quality improvement, and directed by interested parties across the field of health care, PQM has a vision that the quality measure endorsement process should be reliable, transparent, attainable, equitable, and most of all, meaningful.

For more information, please visit the [PQM website](#).

[Grow Your Network](#)

[Become a PQM Member](#)

Follow PQM on LinkedIn to stay up to date with events, public comment opportunities, and important deadlines.



Ready to use your health care experience or expertise to shape the future of health care quality?

Join PQM today! Membership is free.

[Join PQM](#)

---

## Additional Resources

### From Research to Reality

Translating Reliability and Validity Findings into Actionable Insights

#### Reliability & Validity Centers for Medicare & Medicaid Services (CMS) Webinar Highlights

On **October 23** Battelle hosted the [CMS](#) Information Session, “**From Research to Reality: Translating Reliability and Validity Findings into Actionable Insights.**”

The 300 attendees heard from, Measure Scientists Jeff Geppert and Dr. Matthew Pickering discuss reliability and validity in healthcare quality measurement.

For more information, please view the [meeting slides](#). The recording will be posted on the [CMS website](#) in the coming weeks!

[PQMSupport@Battelle.org](mailto:PQMSupport@Battelle.org) | [P4QM.org](http://P4QM.org)

Partnership for Quality Measurement | 505 King Avenue | Columbus, OH 43201 US

[Unsubscribe](#) | [Constant Contact Data Notice](#)



Try email marketing for free today!